



# HP Latex 300 Series RIP Setup and Operations





## Table of Contents

### Chapter 1 - Setup

Getting Started .....	1
Installing the RIP .....	2
Configure PC before RIP Installation .....	2
Verifying Your Network Settings for Mac Communication .....	4
Changing Your Network Adapter for Mac Communication .....	5
Something Went Wrong .....	8
Finally Installing the RIP .....	8
Setting Some Permissions .....	9

### Chapter 2 - Networking

Collecting Data .....	11
Installing Printer on a Mac .....	12
Connect to Server for Hot Folder Printing on a Mac .....	14
Installing Printer on Another PC .....	15
Connect to Server for Hot Folder Printing on Another PC .....	16

### Chapter 3 - Printer Operations

Loading Media .....	17
Loading Media Troubleshooting .....	19
Main Menu .....	20
Substrate Menu .....	21
Substrate Library Menu .....	22
Printing Jobs Menu .....	23
Ink Menu .....	24
Connectivity Menu .....	25
Printer Menu .....	26
Help Menu .....	26
Settings Menu .....	27
Changing IP Address on the Printer .....	28
Creating a New Media Profile (L360 only) .....	29





## Chapter 1 - Setup

### Getting Started

Follow the printer setup instructions from the guide packed in the box. Before turning on your printer for the first time you will need a USB memory stick that only contains the firmware for your model printer. To obtain the firmware do a Google search for “Latex LXXX Firmware” where the XXX is the model number. You can also reach it at <http://www.hp.com/go/latex300/support>. Locate the firmware and download it. Place the file in the root of your memory stick.

Start your machine from the switch in the back. Let the machine startup and follow the prompts. When it comes to the screen mentioning you need to install the firmware, place the USB memory stick into the back left side panel that contains the USB slot and the ethernet connection. Install the ethernet cable at this time also if you have not done so.

Continue to follow the on screen prompts. Once it asks for the installation of the Ink Cartridges, you can remove the USB memory stick. Continue to follow the prompts. The last prompt is to load media so it can print it’s alignment pattern and read it. You need to load a smooth material like an adhesive vinyl or photo grade paper. See Loading Media on page 17.

If you are printing from a Mac, you need to obtain two static IP address’ from your IT Department. If no Mac’s are involved in your workflow, you only need one static IP address.



## Chapter 1 - Setup

### Installing the RIP

It doesn't matter which RIP software package you are running Onyx or Scanvec. These packages all work relatively the same. They install on a PC and create a Virtual Printer so you see a printer in the Devices & Printers area in Windows and they create a Hot Folder which is where the Virtual Printer points to. When the RIP is running it monitors the Hot Folder for a job. If it finds a job, it'll start processing it and moves it out of that folder into a work area.

Installation of any of the RIP software requires a few options configured in Windows. The first and most critical is the user account on the Windows PC needs Administrative Privileges enabled. The second is UAC control needs to be disabled. You also need to disable any Anti-Virus software for the installation. If you re-enable it after installation you need to add an exception for the folder that contains the RIP. The next configuration change is if you plan on sending files from a Mac to the PC you need to enable LPD Printing services on the PC. The last change needed is establish a Static IP address on the PC. All of these steps with screen captures follow.

### Configure PC before RIP installation



#### User Accounts and Family Safety

- Change account type
- Set up Family Safety for any user

On the PC go to the Control Panel and select User Accounts

Control Panel Home

- Manage your credentials
- Create a password reset disk
- Configure advanced user profile properties
- Change my environment variables

#### Make changes to your user account

- Make changes to my account in PC settings
- Change your account name
- Change your account type
- Manage another account
- Change User Account Control settings

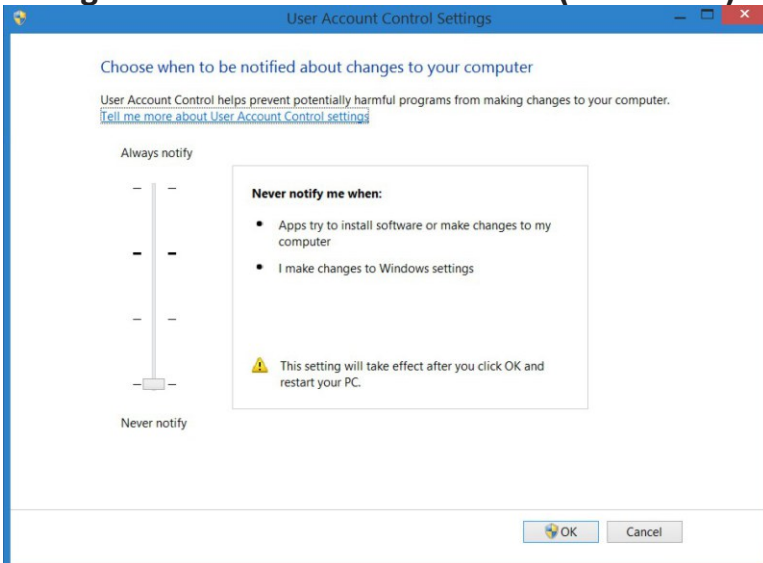


Verify the user account on the right of the image above states Administrator. If it does not, your IT department needs to be involved to setup an account which has Administrative Privileges. Please contact them to preform the following steps.



## Chapter 1 - Setup

### Configure PC before RIP installation (continued)



Go to User Account Control Settings next and verify the slide is down to Never Notify. Select OK and you may be prompted to Restart your computer before it becomes effective. You can put off the Restart until you finish all the following prep work, but you should restart before you install the RIP software.

Disabling the Anti-Virus software can not be covered in this document. There are too many software packages with too many configurations to cover. You need to check with your IT department or the Anti-Virus software manufacturers manual to temporarily shut it down for the installation.



**Programs**  
Uninstall a program

From the Control Panel select Programs.

Perform this following stage if a Mac will print to the RIP

Control Panel Home

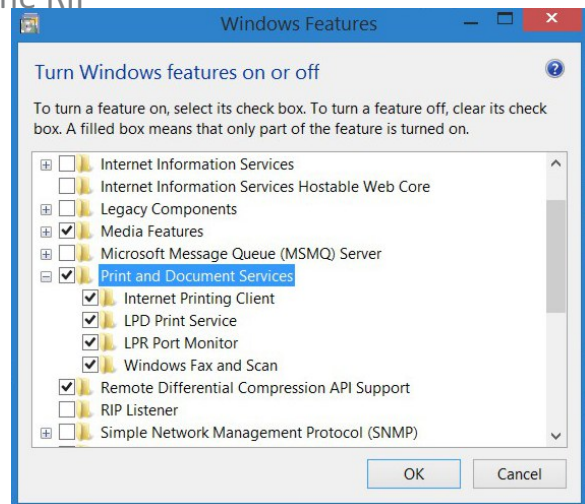
View installed updates



[Turn Windows features on or off](#)

On the left of the Control Panel select Turn Windows features on or off.

A new window opens (shown right). Scroll to Print and Document Services and click on the **+** sign to expand. Click on the check box for LPD Print Service and LPR Port Monitor. Now select the OK button.





Restart the PC. Verify the Anti-Virus software is disabled, and install your RIP software. Follow the manufacturer directions for installing the RIP.



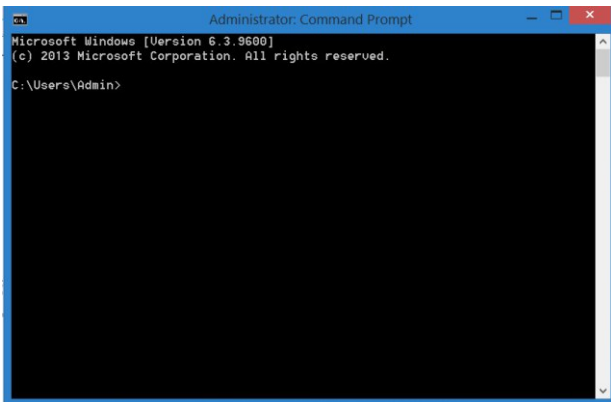
## Chapter 1 - Setup

### Verifying Your Network Settings for Mac Communication

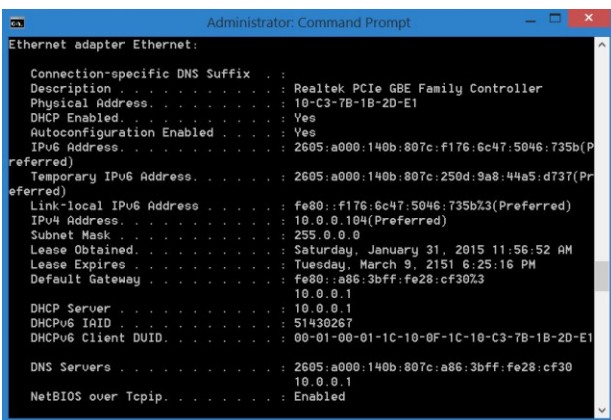
If there are no Mac's that will be communicating to the RIP you can skip this step. If you are on a corporate network controlled by your IT department you need them to supply you with a Static IP address, Subnet mask, Gateway and DNS server before proceeding to Changing Your Network Adapter For Mac Communication. If you are in a small business environment proceed with the next steps.

Our first step is going to the Command Prompt. This will vary based on the Windows version you have. For Windows 8 or higher select the down arrow at the bottom left  on you Start page. In the top right you will see a search box  just type "cmd" without the quotes and search. Now select the App called Command Prompt. From Windows 7 or earlier open the Start button and then Run. Type "cmd" again without the quotes.

A Black window will open.



At the blinking cursor type "ipconfig /all" without the quotes. The window will display all of your Network Adapter setting. Scroll through the setting and locate Ethernet adapter Ethernet: or Local Area Connection for Windows 7 or earlier.



DHCP Enabled state Yes which means every time your PC is started the Router will assign a new IP address to your PC. This may not happen all the time, it's dependant on the order that other PC's and printers are turned on. Power failures will really effect this.

Write down the following data for your system.

- IPv4 Address (sample here is 10.0.0.104)
- Subnet Mask (sample here is 255.0.0.0)
- Default Gateway (sample here is 10.0.0.1)

IPv4 Address \_\_\_\_\_  
 Subnet Mask \_\_\_\_\_  
 Default Gateway \_\_\_\_\_



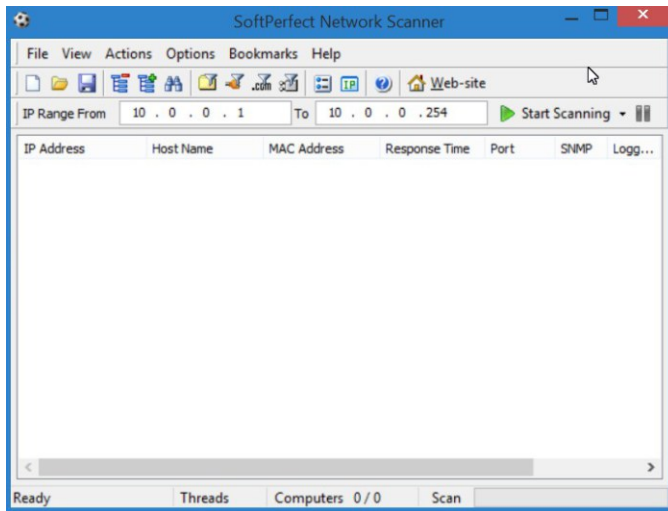


## Chapter 1 - Setup

### Changing Your Network Adapter for Mac Communication

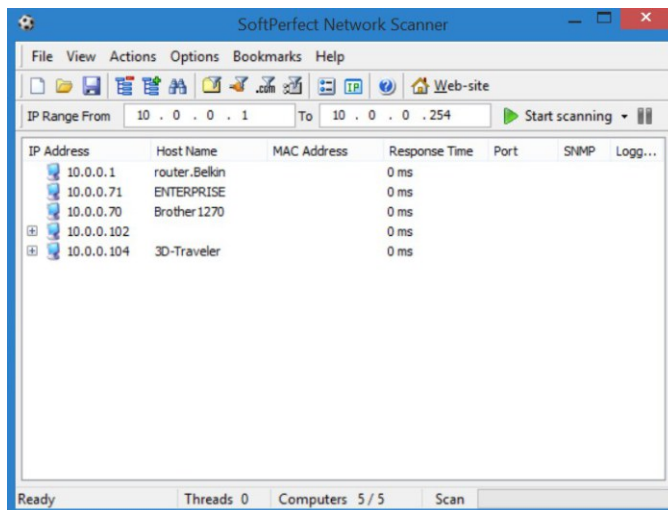
If you have an IP address from your IT Department skip to the next page.

We need to see what else is out on our network. There is a little freeware utility that will help us with that. It's called NetScan which can be downloaded from <https://www.softperfect.com/products/networkscanner/>. Download, install and run this software.



The screen shot on the left shows the application. You need to add the IP range that you wish to scan. Take the first three sets of numbers from the previous page for IPv4 Address. The forth number (octet) should be a 1, in the To section add those same first three sets of numbers and for the forth octet make it 254.

Before you select the Start Scanning button make certain that most of your computers and printers in the office are turned on.



The list populates with everything connected to your network.

In the example on the left, we see a pattern. I know that the 4th octet jumps from 71 to 102. I know my PC is set to DHCP, which means my router assigns IP address' starting at 102. I also notice that my last item in the list is 104.

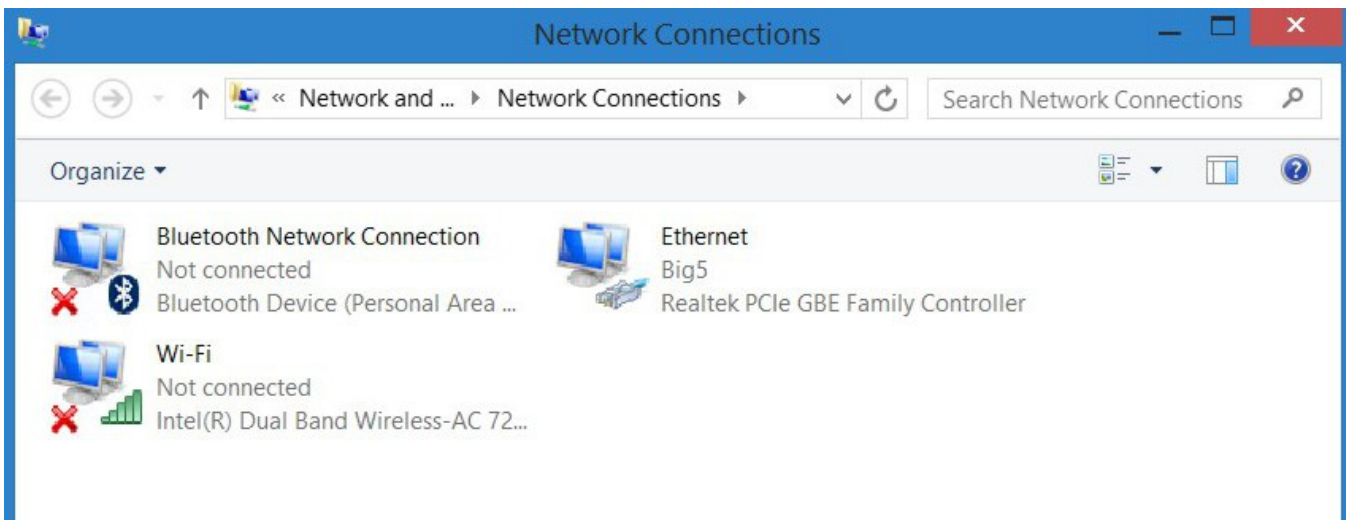
We can safely assume that DHCP starts around 100. Items below that are probably Static IP's.

We could set the Static IP for the PC to 99 or 254. It's your call.

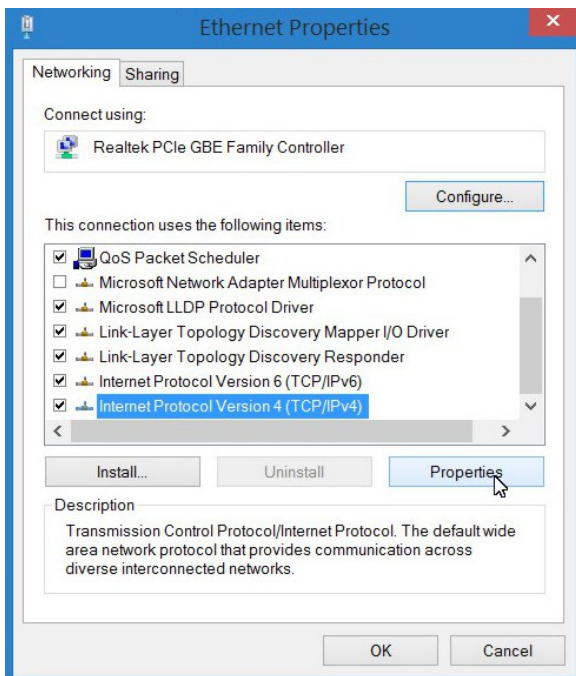
## Chapter 1 - Setup

### Changing Your Network Adapter for Mac Communication (continued)

Go to your Control Panel and select Network. In the left panel select Change adapter settings. The following window appears. In Window 8 or higher you should see Ethernet, in Windows 7 you would see Local Area Connection.



As a note the red X's above indicate that those connections are not active. Right click on the active connection and select Properties. In the next window select the Properties button . A new window appears.

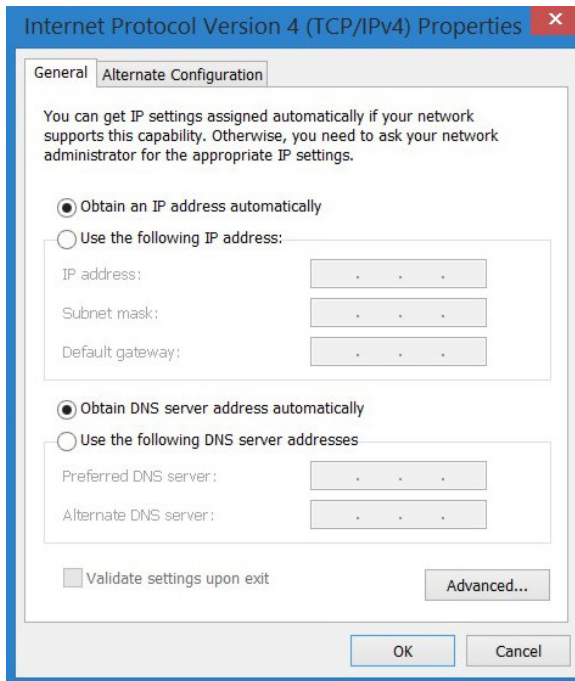


Scroll down the list and highlight Internet Protocol Version 4 (TCP/IPv4). Select the Properties button.

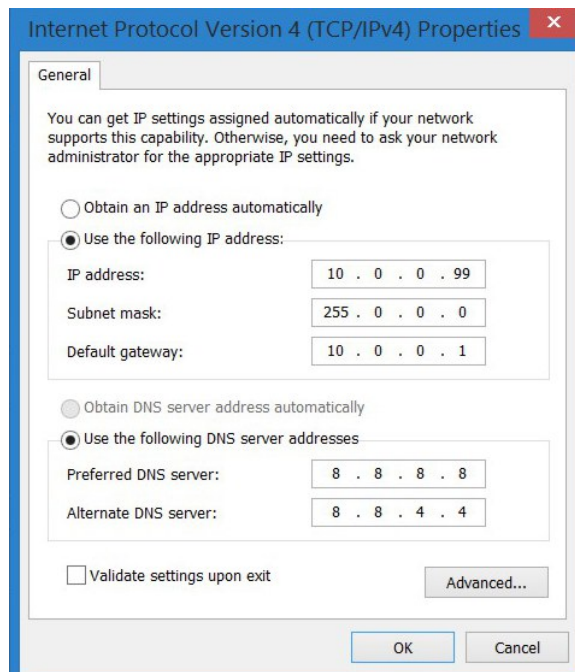


## Chapter 1 - Setup

### Changing Your Network Adapter for Mac Communication (continued)



The window on the left appears. Select the radio button “Use the following IP address”.



Enter your new configuration. You will notice on the example on the left we chose 99 for the final octet.

Depending on your router or other network settings, you may need to add a DNS (Dynamic Name Server). This is where your computer looks for things on the Internet. In your Browser when you type `http://google.com` how does it know where to go. Your computer does not know the IP address of Google. That’s where DNS comes in. In the background the request for google checks at the DNS server which translates the name to an IP address 74.125.224.72.

If you do not have one and you need to enter a set of numbers, make use of Google’s DNS servers.

8.8.8.8  
8.8.4.4



## Chapter 1 - Setup

### Changing Your Network Adapter for Mac Communication (continued)

OK and Close your way out of all the windows that are opened. Open your Browser and enter <http://bigsys.com>. If everything went OK you should see the Big Systems Web Site.

### Something Went Wrong

Go back to page 7 and repeat the process again. Verify your IP address'. There should not be leading 0's. If you are entering 000 for one of the octets, just change it to 0. If that still does not correct the problem go back to page 6 and at page 7 and select "Obtain an IP address automatically" and "Obtain DNS server address automatically". Contact an IT professional to assist before you continue any further through this document.

### Finally Installing the RIP

The RIP that comes with the L310 & L330 printers needs to be download. The link to this site is on the Printer Model / Serial Number plaque on the back of the printer on the right side. The serial number for the RIP is also located here. Download it and install it. Just accept the End User License Agreement and use the defaults to next your way through.

If you are using Onyx or other RIP software, have your Hardware Key plugged into a USB port and install the RIP from the CD/DVD. Accept the End User License Agreement and use the defaults to next your way through.

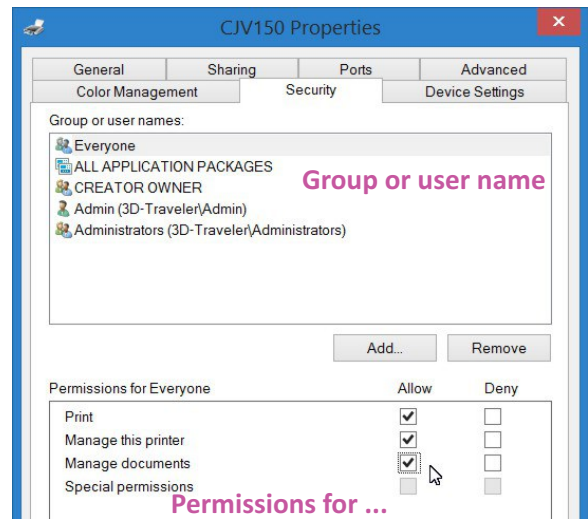
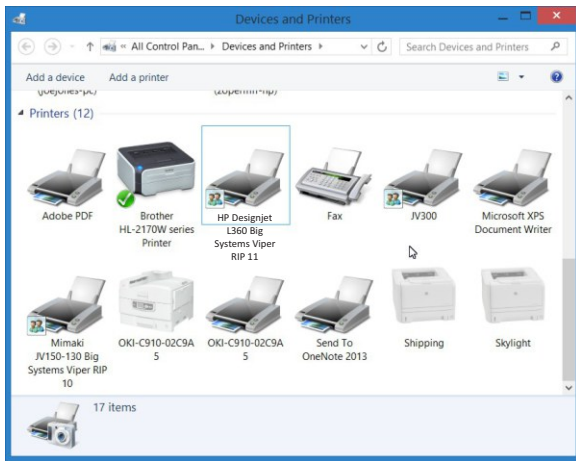
Have the static IP address for the printer ready. During the installation for the printer in the RIP, you will need it. When setting communication to the printer select TCP/IP and enter the static IP address.



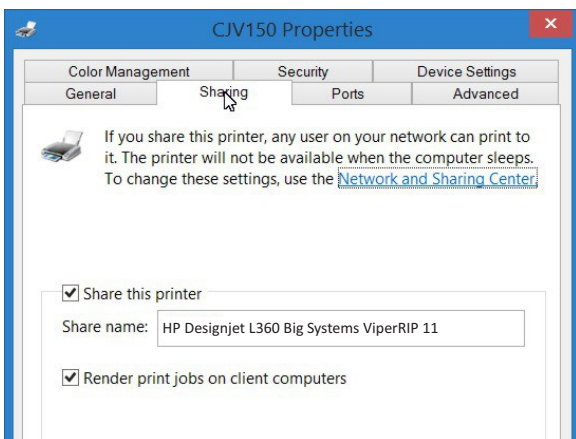
## Chapter 1 - Setup

### Setting Some Permissions

Go to the Control Panel->Devices and Printers. Right Click on the printer you installed and select Printer Properties. Now select the Security Tab.



Highlight each one of Group or user names. As you select each one, the Permissions are listed. Make certain all Permissions are set to Allow.



Go to the Sharing tab. Make certain the Share this printer box is checked as well as the box for Render print jobs on client computer.

Write down the Share name. You will need this for the Mac. Select the OK button at the bottom to accept your changes.

Repeat this page for each Printer you have installed in the RIP.





## Chapter 2 - Networking

### Collecting Data

Collect the following data before proceeding.

Collect the following data before you proceed.

IP Address of PC \_\_\_\_\_

Login Name \_\_\_\_\_

Login Password \_\_\_\_\_

Share Name for the Printer \_\_\_\_\_

Computer Name \_\_\_\_\_

User Name & Password for Program installation on each Mac. Write it in pencil so you can make changes.

**Name of Mac**  
Identity "Jims", "Mac1"

**Username for Login**  
Login Name

**Password for Login**  
Password to install applications

<b>Name of Mac</b> Identity "Jims", "Mac1"	<b>Username for Login</b> Login Name	<b>Password for Login</b> Password to install applications





## Chapter 2 - Networking

### Installing Printer on a Mac



Copy the PPD from the RIP to a memory stick. You will need this for each Mac.

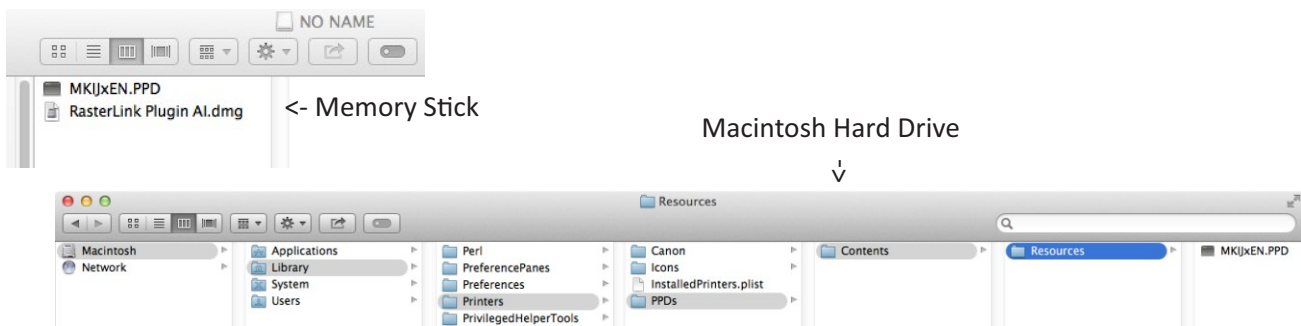
PPD locations:

Onyx - C:\Onyx11\Server\PPD

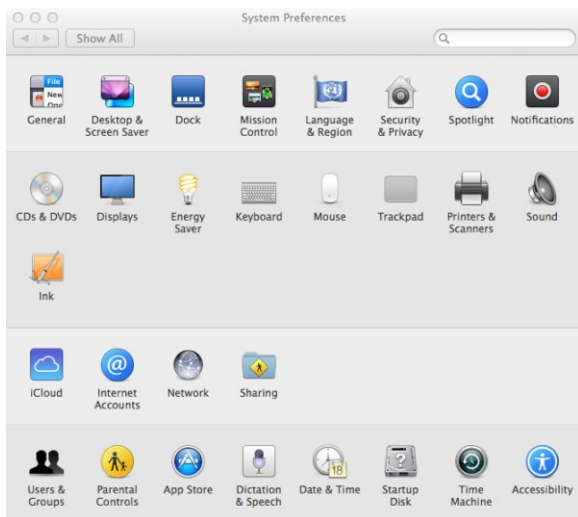
Wasatch - Application CD-PPDs-Mac open Version Notes in Notepad. Look for the PPD filename.

Scanvec -

Open your Memory Stick. Copy the PPD to Macintosh->Library->Printers->PPDs->Contents->Resources



Go to ->System Preferences and select Printers & Scanners. Select the sign in the next window.







## Chapter 2 - Networking

### Installing Printer on a Mac (continued)

Select the IP icon.

The 'Add' dialog box shows the 'IP' icon selected in the top navigation bar. The 'Address' field is empty with the placeholder text 'Enter host name or IP address.'. The 'Protocol' is set to 'Line Printer Daemon - LPD'. The 'Queue' field is empty with the placeholder text 'Leave blank for default queue.'. The 'Name', 'Location', and 'Use' fields are also empty with their respective placeholder text.

Enter Your IP Address, Queue is the Share Name, Name is what ever you want to recognize the printer to by.

The 'Add' dialog box now has the following values: 'Address' is '10.0.0.102' with the note 'Valid and complete host name or address.'; 'Protocol' is 'Line Printer Daemon - LPD'; 'Queue' is 'HP Designjet L360 Big Systems ViperRIP 11' with the note 'Leave blank for default queue.'; 'Name' is 'Latex L360'; 'Location' is empty; and 'Use' is 'HP Designjet L360 for Onyx Graphics'.

For Use, select the pull down, select your printers name It may be prefixed by the RIP name. Now press the OK button.

The 'Printer Software' dialog box shows a list of printer models. The 'HP Designjet L360 for Onyx' model is selected and highlighted. Other models in the list include Epson 9-Pin Series, Epson New Stylus Color Series, Epson New Stylus Photo Series, Epson Stylus Color Series, Epson Stylus Photo Series, HP DeskJet Series, HP LaserJet Series PCL 4/5, Intellittech IntelliBar Label Printer, 1.5, Oki 24-Pin Series, and Oki 9-Pin Series. 'Cancel' and 'OK' buttons are at the bottom.

Finish by selecting the Add button in the next window.

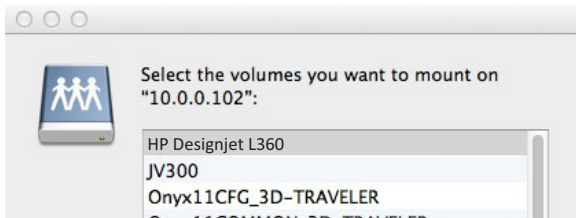
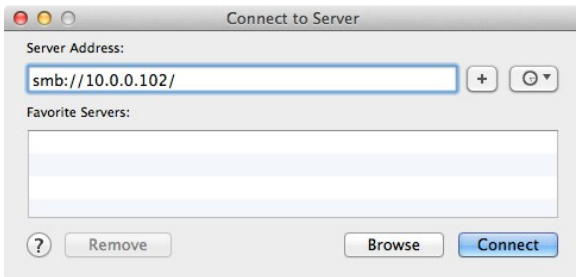


## Chapter 2 - Networking

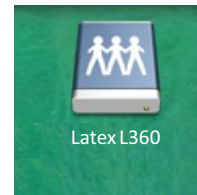
### Connect to Server for Hot Folder Printing on a Mac



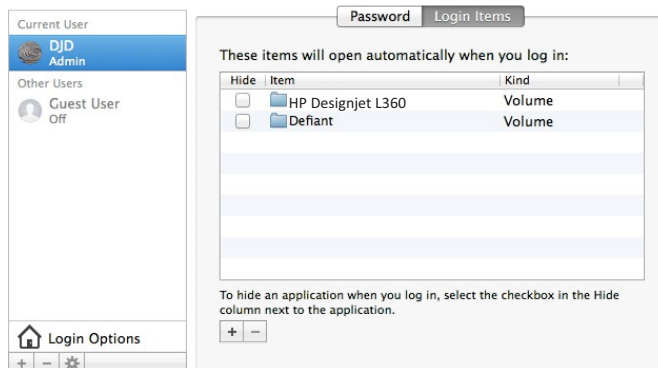
Go to Connect to Server and enter smb://IP Address of RIP Pc PC. Select Connect as Guest.



Select the folder that is the name of your printer, then the OK button. You should now see the connection on your Desktop.



Go to -> System Preferences and select Users and Groups.



Select the Login Items tab and add the volume. This will place the link on your Desktop the next time you start your Mac.

Click the lock to make changes.



Repeat the last three pages for each Mac that requires printing access to the RIP.

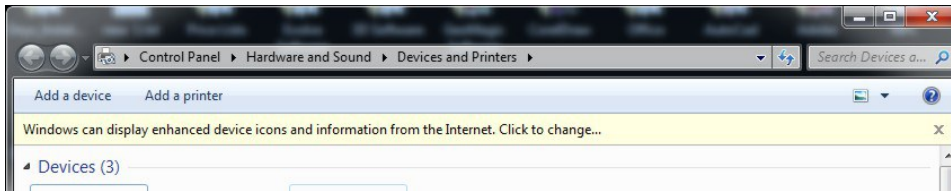


## Chapter 2 - Networking

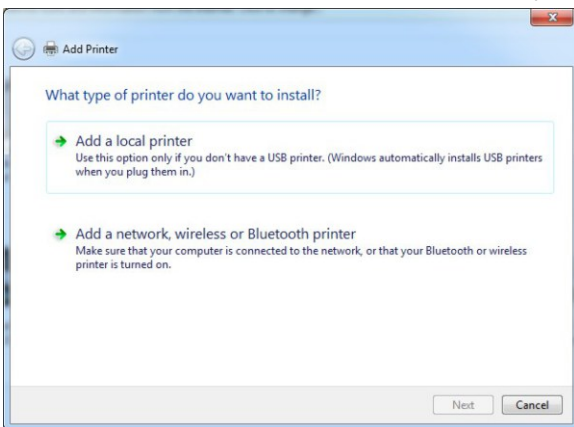
### Installing Printer on Another PC



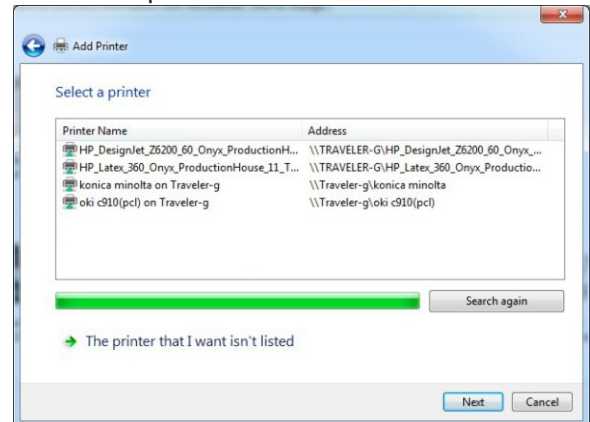
Open the Devices and Printers window via the Control Panel and select Add a printer.



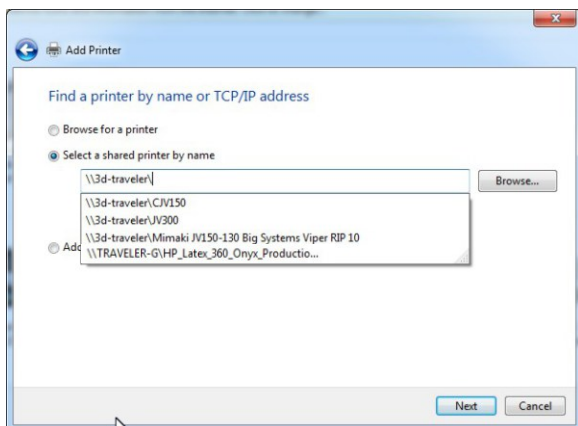
Select Add a network, wireless or Bluetooth printer.



If the printer is shown in the list select it. If it is not select "The printer that I want isn't listed".



If selected "The printer that I want isn't listed" we will need to Browse for the printer or type in \\Computer Name (collected on page 8)/ the list should display available printers on that computer. If connected it should display the printers available. You can also add the share name after the Computer Name. If not connected, you may need to enter the User Name and Password for the PC that has the RIP. Then you should see the printer and select it.



OK your way through the remainder of the installation process to complete adding a printer on your remote PC.

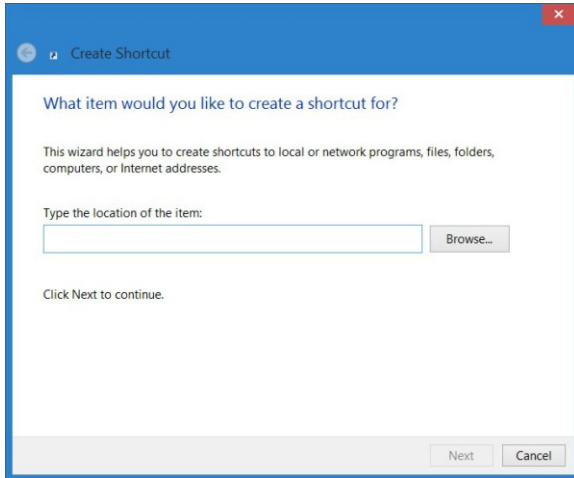


## Chapter 2 - Networking

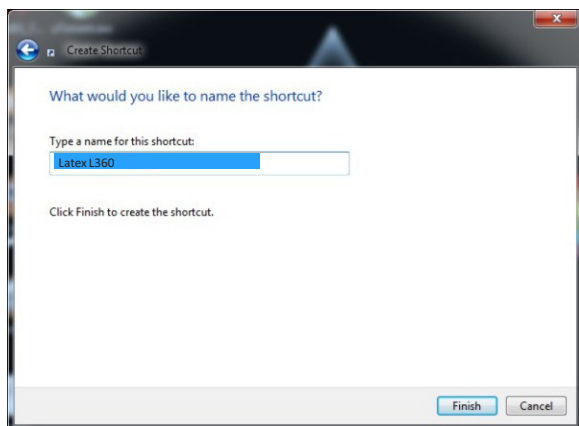
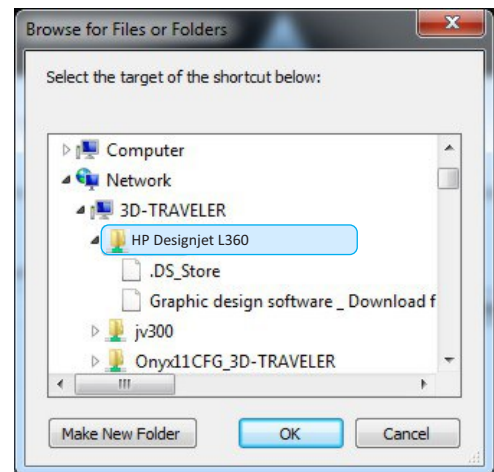
### Connect to Server for Hot Folder Printing on Another PC



Right click on your Desktop and select New->Shortcut. Now select the Browse button.

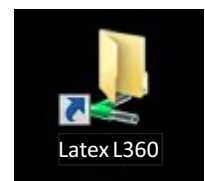


In the sample below you need to select Network->Computer Name-> Printer name.



You now have a prompt that allows you change the name of the link. Some RIP software adds lots of un-needed name information. You can shorten it here.

Finish by selecting the OK button above, and change the name if desired in the image on the left. Your shortcut should appear on the desktop.

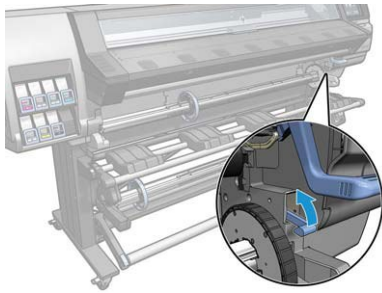


Repeat the last two pages for every PC that requires printing access to the RIP.

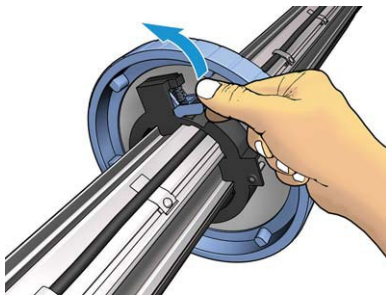
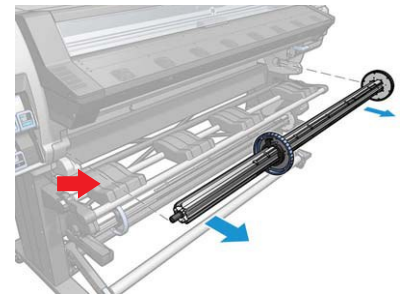
## Chapter 3 - Printer Operations

### Loading Media

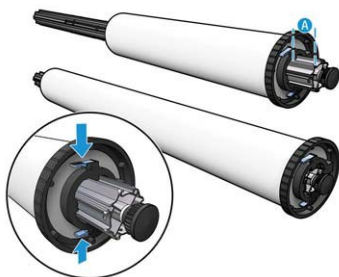
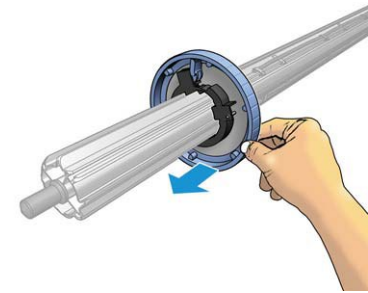
This is a general media load procedure. If you are loading textiles, curly substrates, thin media or narrow media please refer to the HP Latex 300 Printer User Guide.



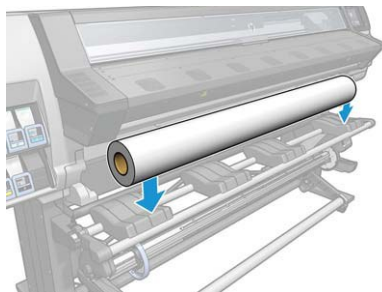
Lift the little blue spindle release lever as depicted on the left. Pull the spindle assembly straight out as shown on the right. Place the spindle on the tray (red arrow).



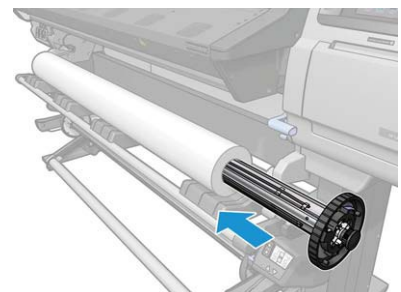
Lift the blue lever on the left side of the blue media stop (shown on left). Slide the media stop to the left to remove.



Depending on the size of the media you are loading you may need to adjust the black media stop. If the width of your roll is at the maximum width of your printer slide it to the far outside edge by pressing the two blue tabs and sliding it. If the roll width is shorter than your printers maximum width slide it in. There are a set of holes that the pins drop in from the release tabs.



Remove the spindle from the tray and place your roll of media on it (shown on the left). From the right side, slide the spindle through the media core.

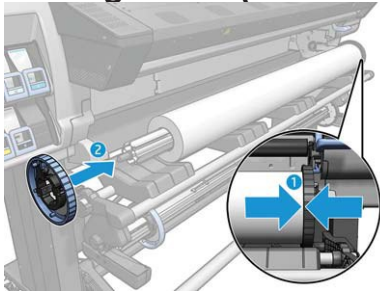




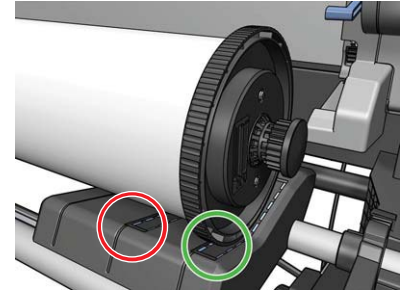


## Chapter 3 - Printer Operations

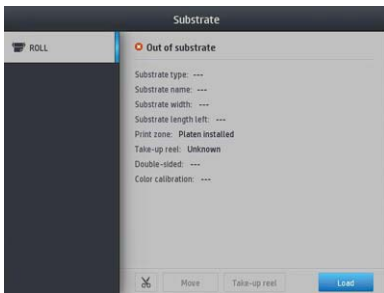
### Loading Media (continued)



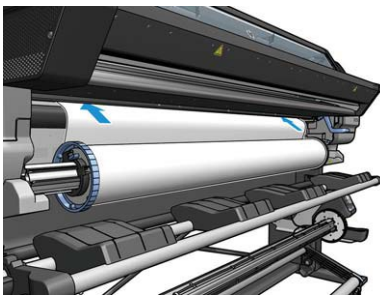
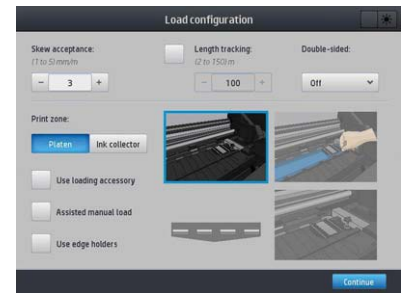
Make certain the media is flush to the right side media stop (1). Slide the blue media stop back on from the left (2) (shown on left). Lift the roll and place it so the right media stop is located in the proper groove on the tray. Green circle if full width and red circle if short media.



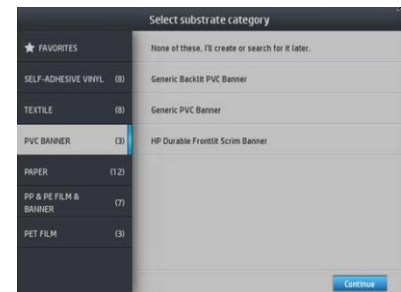
From the touch screen select the media option shown on the left.



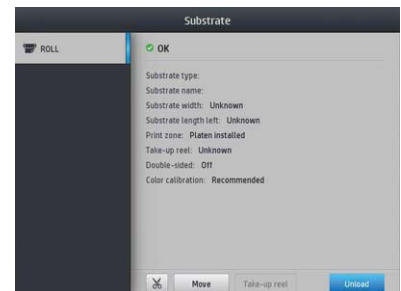
Select the Load button on the display. The Load configuration screen appears (seen on right). Leave at defaults unless you are use special media then refer to the HP Latex 300 Printer User Guide.



Thread the media as shown on the left, over the knurled roller. Use the roller to push the media into the machine. Once it detects media it will grab and move the media. The screen on the right appears. Select the media group and then the media name and press the Continue button.



The printer will start the load process. Moving the media back and forth, checking the width and skew. If you were successful the screen on the right appears.



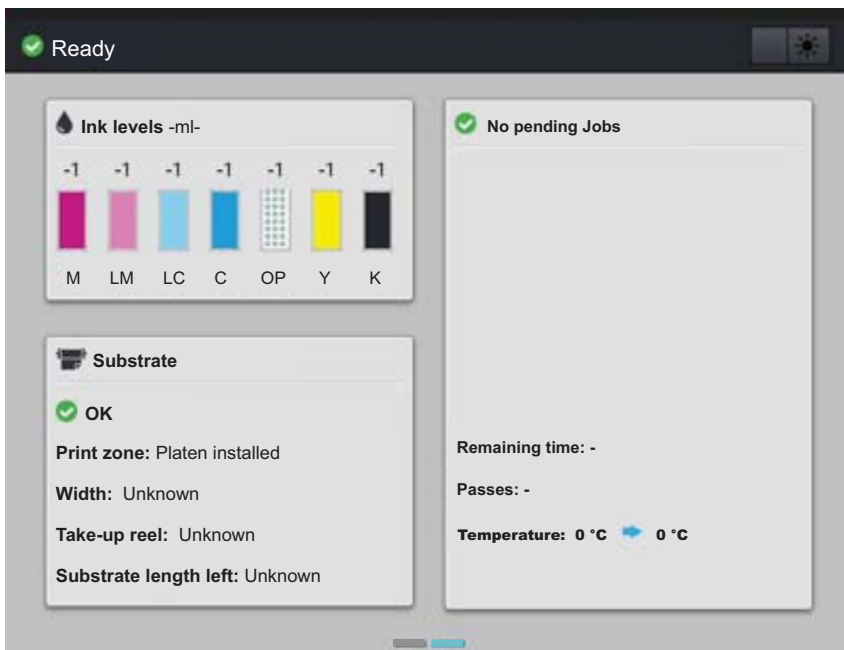


## Chapter 3 - Printer Operations

### Main Menu



There are two menu screens that you will be accessing on a regular basis. The Main Menu shown here on the left and the Status Page shown on the bottom left. Notice the little blue rectangle at the bottom center of the screen. This indicates which of the two pages you are on. Like most phones and tablets it's a matter of placing your finger on the screen (not on any of the buttons) and swiping it left or right to see the other page. More on the Main Menu options follow on subsequent pages.



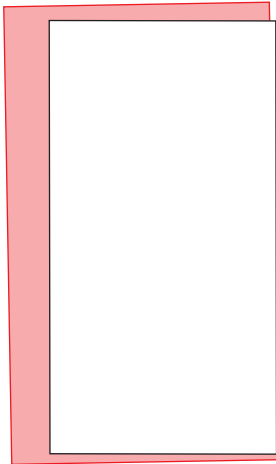
The Status Page contains information on Ink Levels, Substrate and the status of any job that is printing. You can not make any changes here, it just shows information.



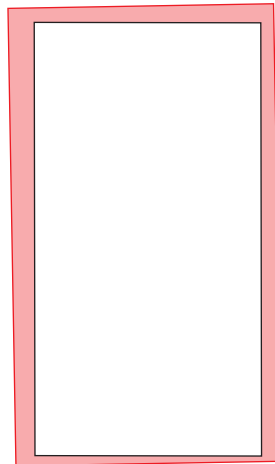
## Chapter 3 - Printer Operations

### Loading Media Troubleshooting

Media is too skewed to continue. This message appears if the media skew is more than 3mm per meter. The display gives you three options Abort, Retry or Continue. If this is your first load for the print head alignment test select Continue. In the examples below the salmon color is depicted as your media and the white is your print.



Left or right justify in the RIP will produce this. The print runs off the edge of the media.



Center justify in the RIP will give you this dependant upon how skewed the media is. If you are printing a 35" wide print on a 36" roll this may or may not work. This is not the cure all for skewed media.

Avoiding skew takes practice. Make certain the media is flush to the black media stop. When loading over the knurled roller, press the media onto the roller and with your hands on the edges turn it in evenly.

### More on retry. & Abort.

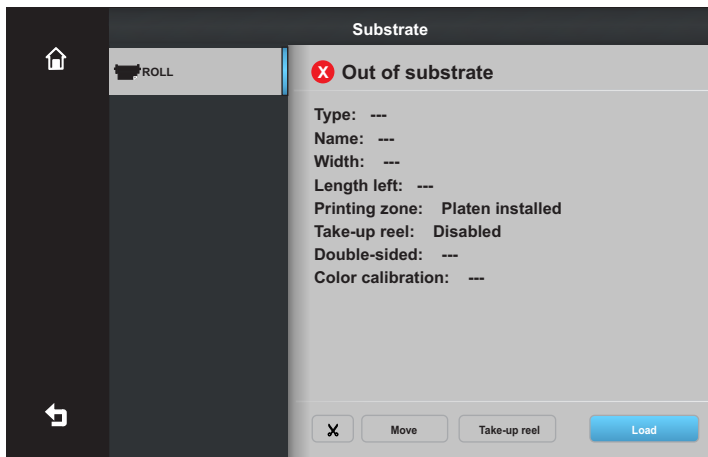
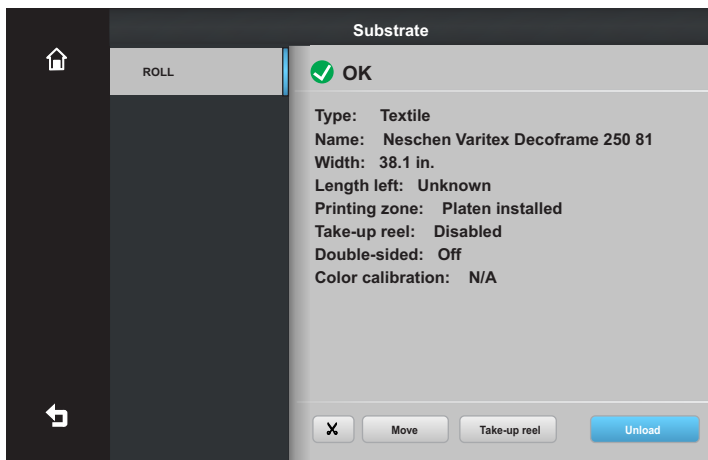


## Chapter 3 - Printer Operations

### Substrate Menu



The Substrate menu displays the media type loaded. Gives you the ability to cut the media (L360 only), advance the media, load the take-up reel (if equipped) and unload the roll of media.



If there is no media loaded, you can initiate the Load media process from here.

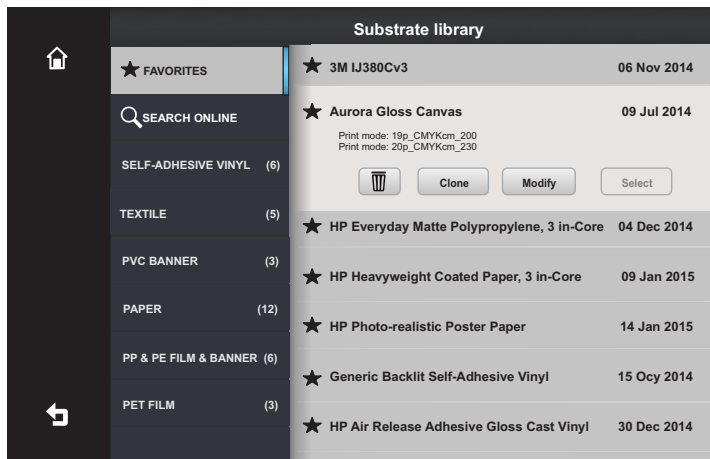


## Chapter 3 - Printer Operations

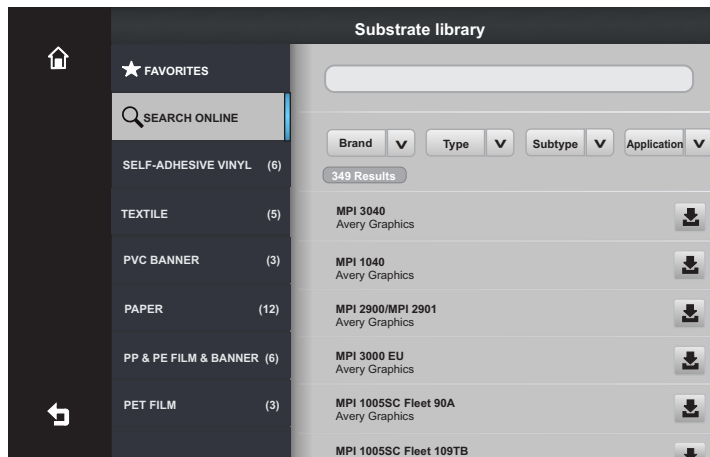
### Substrate Library Menu



There are two scrollable cells in the Substrate Library menu. Touch & hold then scroll up or down to view other options. The Home button will take you back to the Main Menu. The Back button will bring you back to the main section of this Substrate Library menu.



By selecting Favorites the list of your favorite media is displayed. The favorites get added when you download a new media from the Search Online feature below or by pressing the open star next to the media name. To remove the media from your Favorites list tap on the solid ★ star.



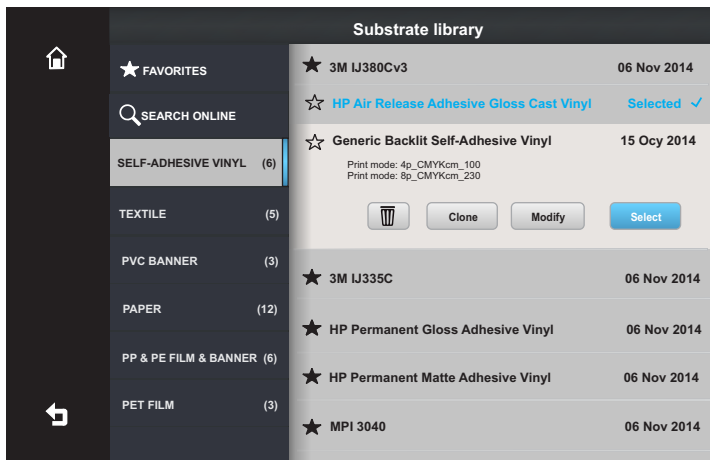
Search Online gives you the ability to locate media on the HP server. These can be refined by Brand, Type, Subtype or Application. Number of results in the search is listed under the Brand pull down. Once you locate the media you want to download select the download button .

The RIP media selection will also update itself after a few minutes giving you the ability to select the profile.



## Chapter 3 - Printer Operations

### Substrate Library Menu (continued)

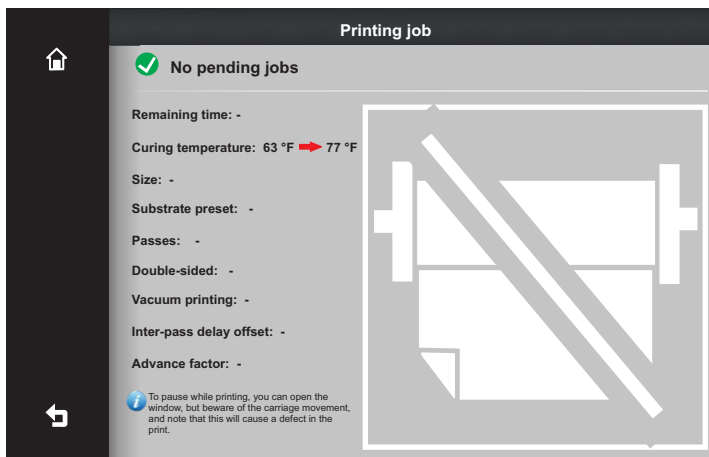


Media groups are located below the Search Online option on the left. These groups display a number in parenthesis to show the number of media in the group. Once you tap on the name of the media in the right side panel it will expand (shown on the left). Your options are Delete, Clone, Modify and Select. Delete removes the media from the printer. Clone will duplicate all the setting for this media and prompt you for a new media name. Modify allows you to change heat, vacuum and feed setting to name a few. Select changes the media configuration for the currently loaded media. So if you loaded a paper profile by accident you just come into the Substrate Library and change it to this backlit if need be.



Notice the hollow and solid stars above. Solid means it is a Favorite, hollow means not a favorite. Tap on the star to toggle.

### Printing Jobs Menu



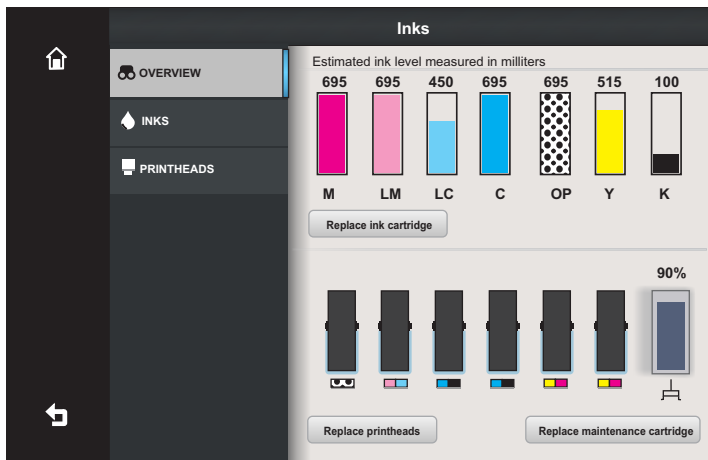
This will display the status of the current job the is printing.

## Chapter 3 - Printer Operations

### Ink Menu

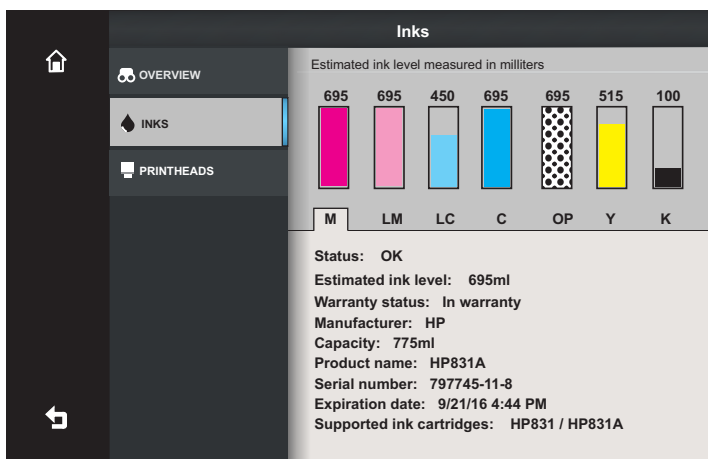


The Ink menu is the quick link to replace cartridges and printheads.



The Overview sub-menu has the buttons to replace ink cartridges, replace printheads and replace maintenance cartridge. It also tells you the overall volume of ink in the cartridges. Selecting Replace ink cartridges will evacuate the air in the cartridges to allow you the ease of removal. Replace printhead and maintenance cartridge moves the carriage into the middle of the platen.

All three procedures just follow the easy on screen prompts to continue.



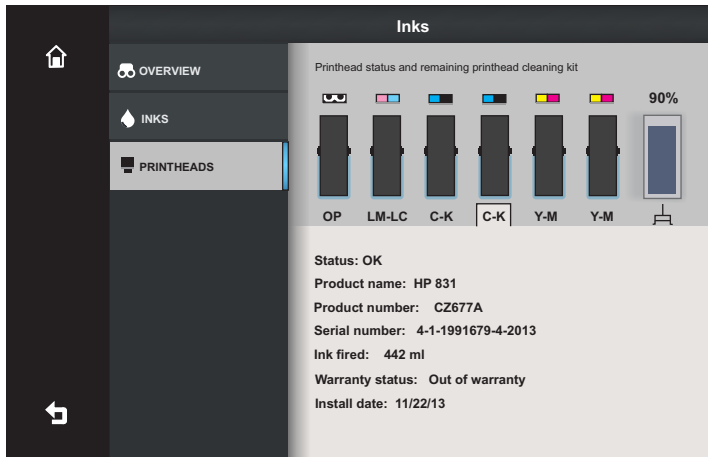
The Ink sub-menu has no buttons but does have tabs under each ink color. Here we see the Ink cartridge information. This info has two major elements. Warranty and Expiration date.

To scroll through the different colors just tap on the alpha characters for the color.



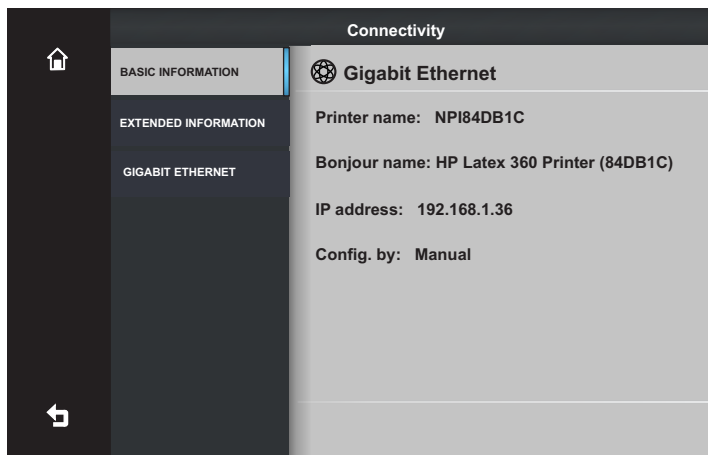
## Chapter 3 - Printer Operations

### Ink Menu (continued)



Like the Ink option on the previous page, the Printheads option allows you to tab through each head. It tells you the date of install, if the head is still under warranty and amount of ink fired through it through its lifetime. This also gives you the product number for future orders.

### Connectivity Menu

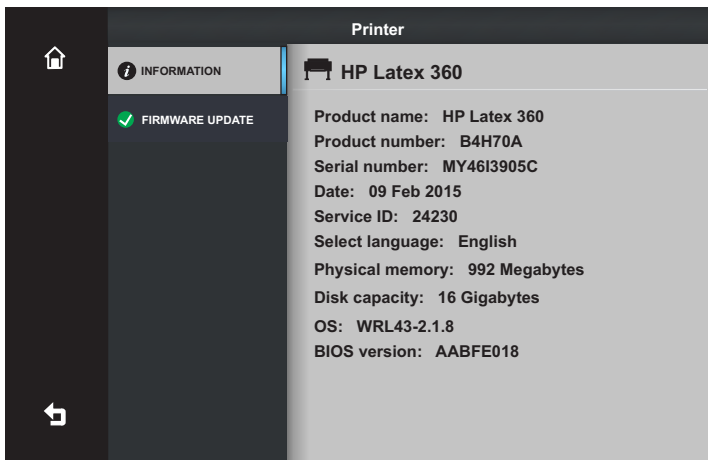


Just another series of information screens for the printer. You can not make any changes in this section.



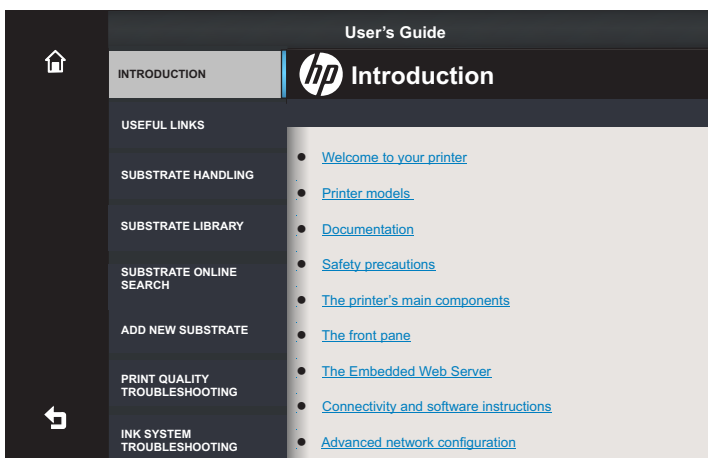
## Chapter 3 - Printer Operations

### Printer Menu



Another series of information screens. No options here to change.

### Help Menu



The help shows offers a variety of information in two scrollable panes.

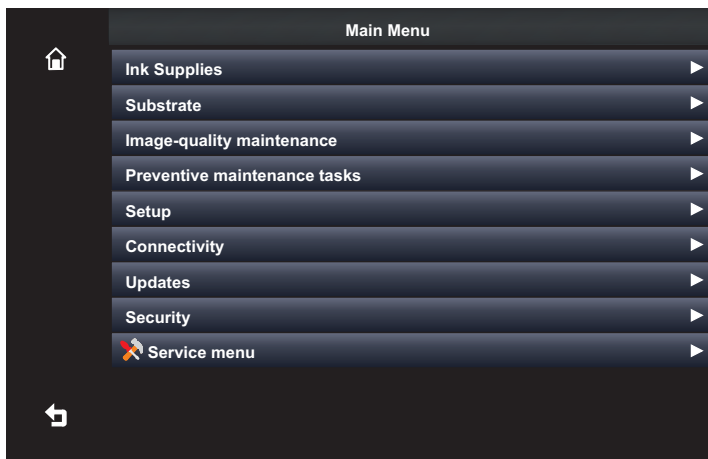


## Chapter 3 - Printer Operations

### Settings Menu



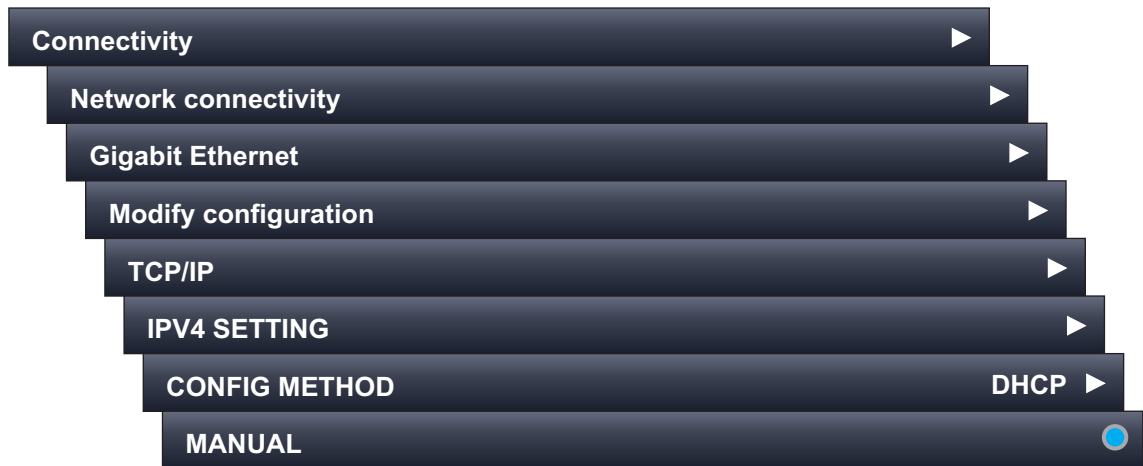
The main section for making on changes on the printers operations. Most of these operational changes are not necessary for



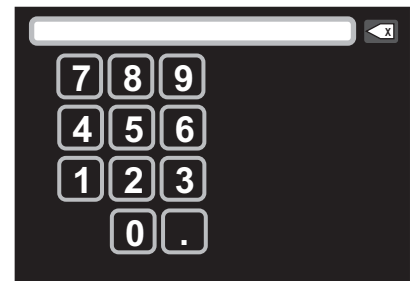
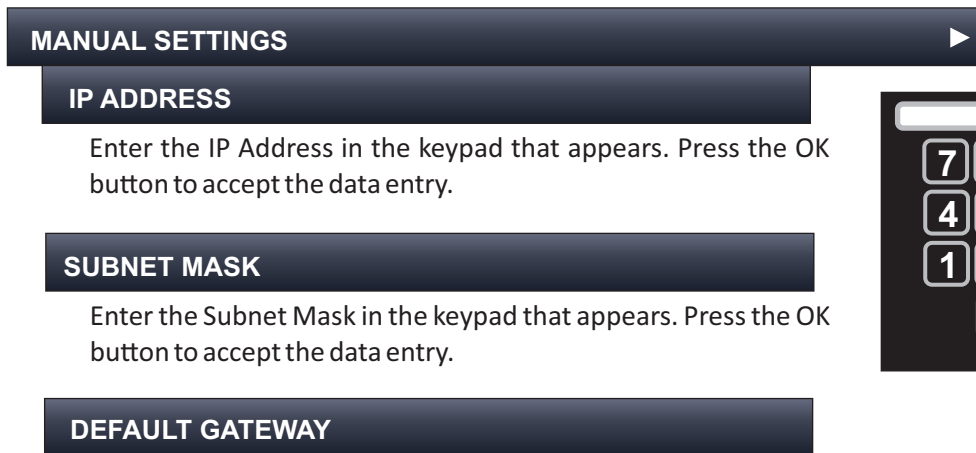


## Chapter 3 - Printer Operations

### Changing IP Address on Printer



Set Config Method to Manual. Then select the back arrow .



Press the Back Arrow several times. You will reach a screen that states “Press OK to confirm or Cancel to Quit”. Select the OK button and the changes will be made to the printer.





## Chapter 3 - Printer Operations

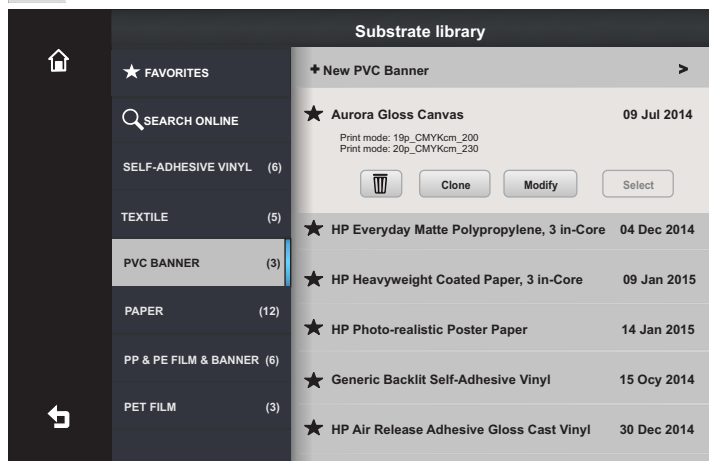
### Creating a New Media Profile (L360 only)

Canned profiles will satisfy 90% of the end users. Generally these profiles are good enough and most media from various manufacturers print very similarly. If you have color critical needs you may need to create your own profile in house.

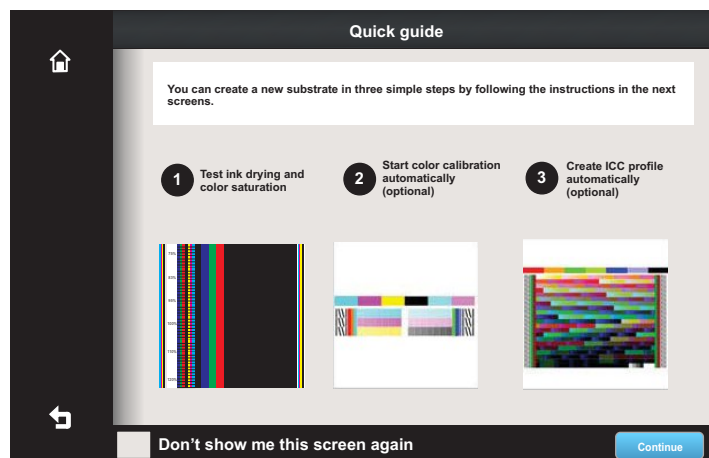
Start by loading the new media into the printer. When asked for the substrate type select None of These.



Select the Substrate Library icon from the Main Menu.



In this example on the left we will create a new PVC Banner profile. Select PVC Banner in the column on the left and then the top entry on the right is New PVC Banner. Select the right arrow > to start the wizard. This process can take from 60 to 90 minutes depending on the number of Print tests you need to perform.

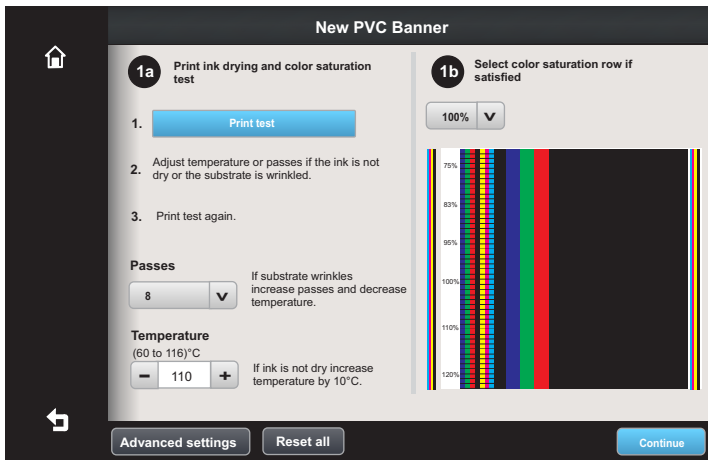


The wizard begins showing you the procedure. Select the box if you want to skip showing this screen in the future. Just select the Continue button to proceed.



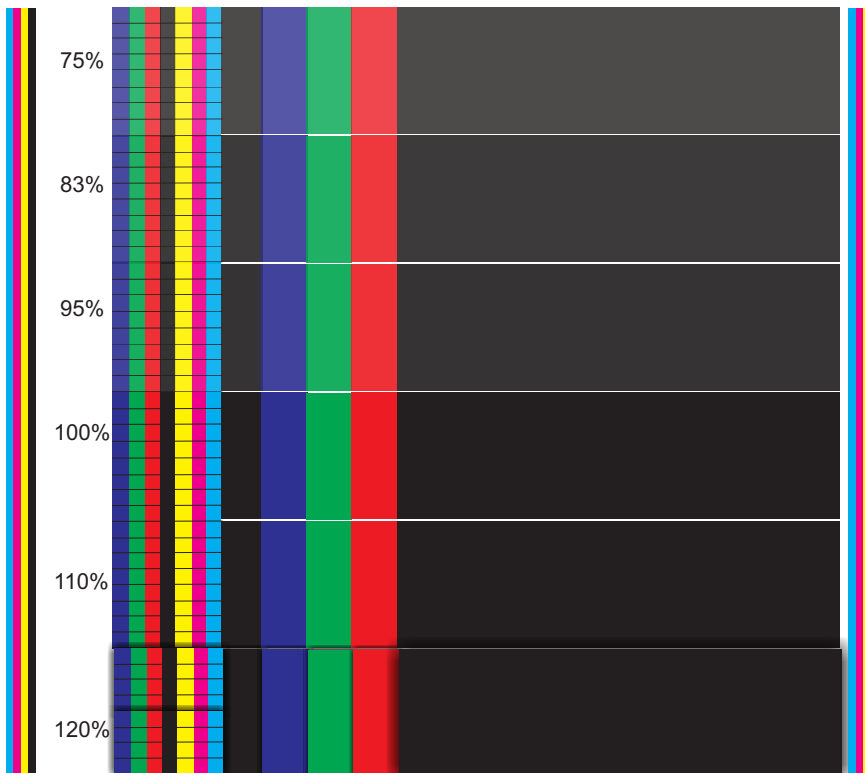
## Chapter 3 - Printer Operations

### Creating a New Media Profile (L360 only continued)



Start by selecting Print test.

Understanding the test print is simple. Color bars down each side verify the integrity of your printheads. The percentages are the amount of saturation used in each section divided by the white lines.



In the sample on the left, you would notice that 75% saturation is too light, as well as 83% and 95%. The 100% and 110% rows look OK but the 120% is bleeding.

The bleeding can be corrected by increasing the passes and the temperature. However, increasing the temperature can wrinkle (cockle) the substrate.

The only reason you would want to increase the saturation level is for outdoor signage or backlit material. Other than pass and temperature settings there are a few options in the Advanced setting explained on the next page.



## Chapter 3 - Printer Operations

### Creating a New Media Profile (L360 only continued)

Advanced settings

<b>Straightness optimization</b> (-6 to 6) mm	- 0 +
<b>Latex Optimizer level</b> (0 to 100) %	- 12 +
<b>Vacuum printing</b> (5 to 100) mm H2O	- 5 +
<b>Advance factor</b> (-10 to 10) mm/m	- 0 +
<b>Inter-pass delay offset</b> (0 to 1500) ms	- 0 +
<b>Printing airflow pressure</b> (50 to 200) mm H2O * 100	- 75 +
<b>Input tension</b> (4 to 40) N/m	- 15 +
<b>OMAS enabled</b>	<input checked="" type="checkbox"/>
<b>Color</b>	CMYKcm ▼

Straightness optimization - See page 83 of the HP Latex 300 User Guide. This is normally not a factor.

Latex Optimizer level - If you have bleed you can increase this until you see a significant improvement. In the example on the previous page increasing this to 20 or so would help the 120% saturation level.

Vacuum printing - Level of vacuum on the platen. Too little vacuum can cause wrinkling, where too much can cause banding.

Advance factor - Use only on L310 or L330 printers. This is to adjust the advance of the media to eliminate banding on the machines that do not have the OMAS sensor.

Inter-pass delay offset - Increasing this can eliminate banding and also aids in drying of the ink between passes. It does slow down the printing operation.

Printing airflow pressure - Adjust the fans, can aid in drying ink or to reduce wrinkling.

Input tension - Increase this value if wrinkled substrate is seen on the platen.

OMAS enabled - Automatic substrate tracking for media advance. Disable only if prompted during the substrate load process. This is only on the L360.

Color - You have two options CMYK and CMYKcm. If you are doing outdoor signs only, you can save on ink by selecting CMYK. If doing indoor signage keep it at CMYKcm.

Use the Back arrow to exit out.

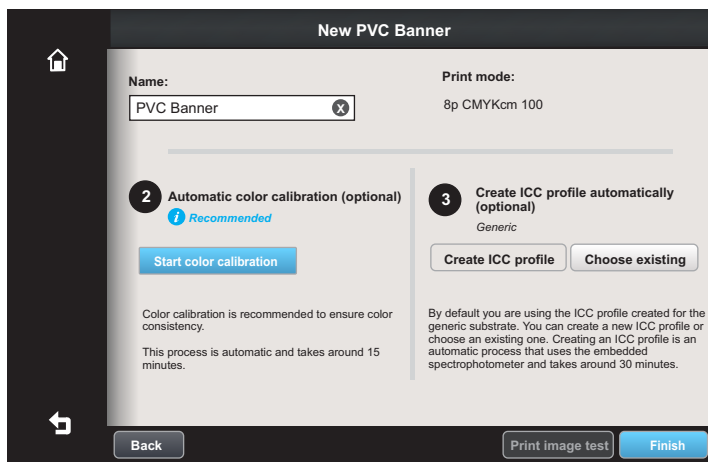


## Chapter 3 - Printer Operations

### Creating a New Media Profile (L360 only continued)

Repeat the process on page 30 until you have a print without wrinkles and good saturation. Once you have it, select the saturation value from the pulldown and then the Continue button on the bottom right.

Enter the name of the media you want to appear.



The last screen as shown on left, allows you to create your color calibration. Create ICC profile and Print test image are grayed out until you perform the Color Calibration.

Since you are doing this, you want the best color possible. After the Color Calibration do Create ICC profile.

We recommend you Print image test after you created the ICC. If all went well, your test image should look beautiful. If not, restart the Color Calibration and follow it by Create ICC profile.

Once finished, press the Finish button. Wait for the RIP to update itself and send one of your color critical jobs to see how much better it is.



Pantone matching is very subjective. Pantone colors are made by mixing 14 base colors while your printer only has 4 base colors. A color like Safety Orange can not be achieved because you do not have an orange ink in your system, especially a Pantone Orange. Your best reference is to have a Pantone Bridge book handy. This book has a Pantone chip printed with Pantone inks and next to it there is a chip printed with CMYK inks. Some colors are very close, while others look a mile apart. Your printers results will be no worse than the bridge example, and in most cases closer to the actual Pantone chip.