



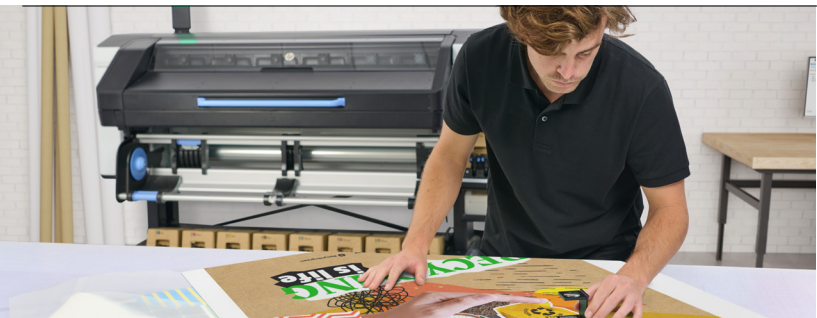
HP Latex 630/730/830 Printer Series

Why To Upgrade



N59W14053 Bobolink Avenue
Menomonee Falls, WI 53051
888.244.4177 bigsys.com

Why Upgrade?



Stunning image quality

Deliver exceptional print quality in both color and white with HP Pixel Control technology. Achieve vivid colors with the latest generation of HP Latex Inks, offering a higher color gamut. Produce sharp 4-point text using the latest HP Latex Printheads, which feature non-circular nozzles. Additionally, take advantage of lower curing temperatures to enable printing on heat-sensitive media.

Unbeatable white ink experience

Expand into profitable new applications with the easiest white ink experience.¹ HP Latex White Ink is easy to maintain and adapts to your business needs.

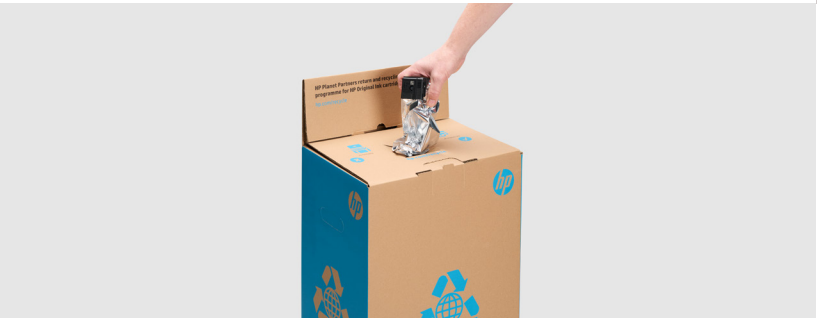


Seamless media loading

Load media quickly and easily with spindle-less front-loading and an improved algorithm for automatic media skew correction. Save media by printing from the leading edge.

Easy maintenance and fewer interruptions

Reduce inventory management with universal, user replaceable HP Latex Printheads and the new 50% extended life maintenance cartridge³.



Win with sustainable solutions

Create a comfortable workspace with odorless prints⁴ and UL ECOLOGO⁵ and UL GREENGUARD-certified HP Latex Inks. Return your supplies via the HP Planet Partners program⁶ and stand out in the market with the only EPEAT Climate+ registered printers⁷ in the signage industry.

Simplified production

Streamline your print workflow with our intuitive end-to-end software: HP PrintOS Production Hub⁸—the world's only large format software that combines order management and remote production control.⁹



Open the Door to More Possibilities



HP Latex technology is a trusted choice for everyday applications, while enabling premium, high-value projects—so you can confidently take on any challenge.

Vehicle wrapping

Simplify your workflow. Instant-dry inks stretch easily for fast installation. Vibrant colors and strong adhesion lead to stunning, profit-boosting results.



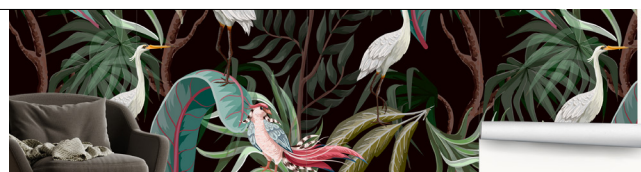
Window graphics

Expand into high-value, high-impact window graphics. HP Latex Inks deliver exquisite color and opaque whites on odorless prints⁴—fast, easy, and perfect for indoor spaces.



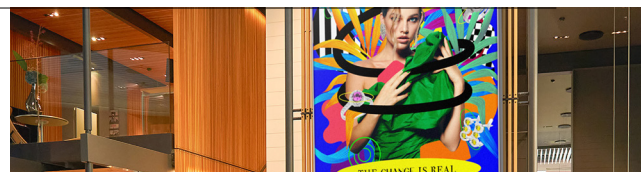
Wallcoverings

Deliver stunning, eco-friendly wallcoverings with HP Latex Inks. Enjoy seamless tiling, vibrant colors, and preserved textures on a variety of materials for exceptional results.



Retail decorations

From backlits to wallcoverings, print vibrant, odorless⁴ retail décor with durable, crack-resistant results. See accurate colors and opaque whites or premium indoor applications.



Comparison Table



HP Latex 630/630 W



HP Latex 730/730 W



HP Latex 830/830 W

Technical specifications

| | | | |
|---|---|---|---|
| Roll weight [kg] | 42 kg | 55 kg | 55 kg |
| 4-pass (speed per hour) ^A | 151 ft ² /h - 18 m ² /h | 334 ft ² /h - 31 m ² /h | 388 ft ² /h - 36 m ² /h |
| 6-pass (speed per hour) ^B | 118 ft ² /h - 14 m ² /h | 226 ft ² /h - 21 m ² /h | 269 ft ² /h - 25 m ² /h |
| 8-pass (speed per hour) ^C | 83 ft ² /h - 11 m ² /h | 183 ft ² /h - 17 m ² /h | 215 ft ² /h - 20 m ² /h |
| White spot (60%) [m ² /h - ft ² /h] | 108 ft ² /h - 10 m ² /h | 183 ft ² /h - 17 m ² /h | 183 ft ² /h - 17 m ² /h |
| RIP included | Yes | Yes (with cutter) ^D | — |

Image quality

| | | | |
|-------------------------------------|-----|-----|-----|
| HP Pixel Control technology | Yes | Yes | Yes |
| Extended Gamut & Sharp 4-point text | Yes | Yes | Yes |
| HP Embedded Spectrophotometer | Yes | Yes | Yes |

| | HP Latex 630/630 W | HP Latex 730/730 W | HP Latex 830/830 W |
|---|---|---|---|
| Application versatility | | | |
| White printmodes | White Spot, Underflood, Overflood, 3-layers | White Spot, Underflood, Overflood, 3-layers, 5-layers | White Spot, Underflood, Overflood, 3-layers, 5-layers |
| Automated double-sided printing | - | Yes | Yes |
| Heat sensitive materials | Yes | Yes | Yes |
| Porous textiles or mesh | - | Yes (with textile kit accessory) | Yes (with textile kit accessory) |
| Modular inkset with separate overcoat | Yes | Yes | Yes |
| 3M™ MCS™ Warranty | Yes | Yes | Yes |
| ICS Performance Guarantee | Yes | Yes | Yes |
| Supplies | | | |
| Ink cartridge capacity | 1 L | 1 L | 3 L |
| Number of printheads | 5 / 6 | 8 / 10 | 8 / 10 |
| Universal HP 836 Latex Printheads | Yes | Yes | Yes |
| Maintenance cartridge with user replaceable ink collection unit | Yes | Yes | Yes |
| Usability | | | |
| Raisable curing module | - | Yes | Yes |
| Front-loading, spindle-less and automatic skew check | Yes | Yes | Yes |
| Job queue storage in front panel | 40 jobs/10 GB | 100 jobs/144 GB | 100 jobs/144 GB |
| Print from leading edge ² | Yes | Yes | Yes |
| Hot Swap (change supplies while printing) | – | Yes (only for W SKU) ^E | Yes |
| Solutions & Services | | | |
| HP PrintOS Production Hub | Yes | Yes | Yes |
| HP Professional Print Service Plans | Yes | Yes | Yes |
| Sustainability | | | |
| Sustainable cartridges | Eco-Carton / 100% label-less | Eco-Carton / 100% label-less | Eco-Carton / 100% label-less |
| Supplies recyclability through HP Planet Partners (ink bags, printheads, maintenance cartridge) | Yes | Yes | Yes |
| EPEAT certification & UL ECOLOGO® | Yes | Yes | Yes |

A. 4-pass, 4 color. Print mode based on banner media category. Print speed may vary depending on the application produced. Based on internal HP testing in January 2025 with PVC Banner Starflex SFF13.
B. 6-pass. Print mode based on self-adhesive vinyl applications. Print speed may vary depending on the application produced. Based on internal HP testing in January 2025 on Avery 3001.
C. 8-pass. Print mode names based on self-adhesive vinyl applications. Print speed may vary depending on the application produced. Based on internal HP testing in January 2025 on Avery 3001.
D. HP FlexiPRINT and CUT software included when buying the HP Latex 64 Plus Cutting Solution.
E. Only available in HP Latex 730 White.

Footnotes

1. Automatic White Ink Recirculation System between the HP Latex 832 Ink Mix and HP 832/873 White Latex Ink Cartridge. When not printing with white ink remove the white printheads from the carriage and store them in the offline rotation chamber, avoiding unnecessary white ink waste. White print modes (spot, underflood, overflood, 3 layers, and 5 layers) are available with white ink densities up to 260%.
2. Printing from the leading edge is compatible with the following media categories: self-adhesive vinyl, canvas, and heat transfers. Compatibility with PET films, papers, and polypropylenes depends on media characteristics.
3. At least 50% more life thanks to a 40% longer cleaning cloth and new ink collection unit that uses 100% of the cleaning cloth compared to previous maintenance cartridge model.
4. Applicable to HP Latex inks. Based on sensory evaluations conducted by Odournet, done according to VDI Guideline 3882 where 832 and 873 inks were characterized as “weak” in odor intensity and “neutral” for hedonic tone. There is a broad set of media with very different odor profiles. Some of the media can affect the odor performance of the final print.
5. UL ECOLOGO® Certified HP 832 and 873 inks meet a range of stringent human health and environmental considerations. For certifications, see www.ul.com/EL and www.ul.com/gg
6. Program availability varies. For details, see hp.com/hprecycle
7. The HP Latex 730 and 830 series is EPEAT Gold in the U.S. and Canada and has achieved EPEAT Climate+. See www.epeat.net for registration status and tier levels by country. As of January 2025, no other competitors in the signage market have been registered in EPEAT.
8. For HP’s large-format printers, HP PrintOS Production Hub is compatible with HP Latex printers and the HP Stitch Printer series. Check the complete list of compatible models in <https://www.hp.com/go/printos>. HP PrintOS Production Hub premium features are only accessible when purchasing an HP Professional Print Service Plus Plan. Remote control actions are enabled by HP PrintOS SyncEdge.
9. Based on a competitive comparison of HP PrintOS Production Hub and comparable competitive software solutions from the main large format vendors that compete with HP products commissioned by HP and performed by Sogeti. HP PrintOS Production Hub enables the PSP to remotely control the printer queue and manage the order intake all in one single platform, unlike any others.